

NEWSLETTER



**INTERNATIONAL
EXPERIENCE PROGRAM
SUMMER 2016**



**GUJARAT
TECHNOLOGICAL
UNIVERSITY**

GTU at KSU



PRACHI GODBOLE, ELECTRICAL ENGINEERING

The Difference



“When the going gets tough, the tough get going.”

For 88 people belonging to different colleges affiliated to GTU, our 7th semester started in Kansas State University as a part of the International Experience Program. With our arrival, suddenly all the students of Electronics, Electronics and Communication, and Electronics and Telecommunication Engineering fell under one banner of Electrical Engineering at KSU. The Mechan-

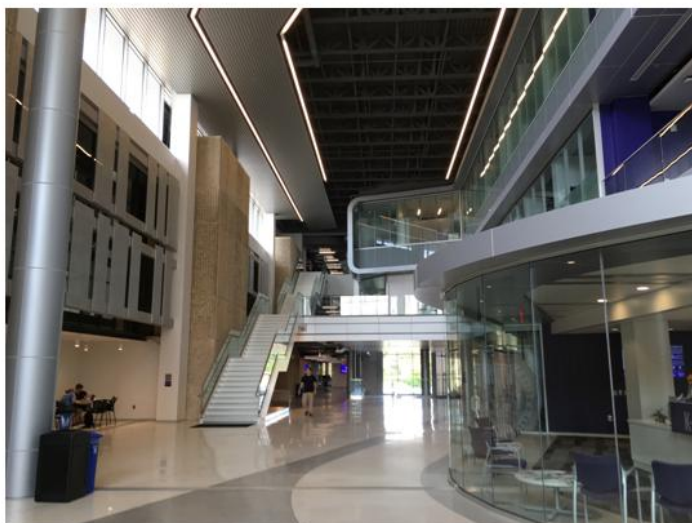
ical Engineering students, well, remained the same old Mechanical Engineering students.

These two months taught us many things apart from just studying for the exam. The teaching pattern focused on overall evaluation instead of depending on just one mid-term and a final exam. We learned the importance of being on time and turning homework in the given deadline. Each homework challenged us. The endgame of this program was not completing the course. It was absorbing all the knowledge that the professors had to offer.

We came here to study two subjects, but all of us leave here having learned how to effectively study and apply the

knowledge we gain every-day.

We had to change our learning habits and it was difficult to adjust, but as Dr. Bala rightly believes, **“When the going gets tough, the tough get going.”**



ON A JOURNEY TO KSU



DHANIK GOHEL, MECHANICAL ENGINEERING

Knock on the door, the day everyone awaits,
Ready we are to embark, on a journey to KSU!

Don't just work all day, fun-frolic-whoopee!
Pave a new way today, on a journey to KSU!

Live Dr. Wanklyn's laughter and Dr. Lease's double BOOM!
Dr. Bala's discipline with Dr. Day's spirit, on a journey to KSU!

Tuttle Lake, Konza Prairie and Crossing Pillsbury,
Will bring y'all together, on a journey to KSU!

Experience this was, unlike any other!
Lived a splendid dream, on a journey to KSU!

'Cashing' in to the memories we created, to savor forever,
Happy tears as we end our adventure, on a journey to KSU!



INDEPENDENCE DAY PRIDE



HAARD PARIKH, MECHANICAL ENGINEERING

Volume 1, Issue 1

Celebrating America!



Freedom is precious for every country!

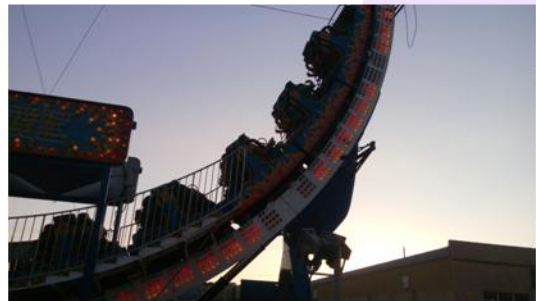
Wamego city of Kansas State celebrates Independence Day in a very beautiful way. Wamego's Independence Day Celebration continues to be a memorable, safe and an event for everyone. It was the 150th Independence Day and we were lucky enough to be there for the celebration.

145th Annual Wamego Inde-

pendence Day Parade had every American thing you need to see. Monster Trucks, Cowboys and Cowgirls trotting on their horses, ATVs and the American Flag. The Carnival celebrated American Food and entertained everyone with its rides. My personal favorites being the Ring of Fire and Zero Gravity. On the other side of the City Park, the 1st Infantry Division Band, Fort Riley, Kansas floored us with their music.

But the final and the best part about the trip to Wamego, turned out to be the Fireworks Show. One of the biggest Fireworks Shows in the Midwest, it was a spectacular display of fireworks which had a "finale

that never ends" ring to it.



THE WILDCAT EXPERIENCE



PRACHI JHALA, ELECTRICAL ENGINEERING

Purple Pride



Caption describing picture or graphic.

The first thing that you will notice about Manhattan is that it is the most welcoming place to a group of jet lagged students. Your first drive leading up to Moore Hall is filled with excitement and you'll forget how tired you are as that excitement fills you up. But let me assure you, that drive is just a sneak peek into what's

going to be an amazing journey.

In the beginning, you'll wonder why the Americans have ACs everywhere, but towards the end you'll complain about the heat too! The best way to experience the campus is to just walk around it. You'll notice the squirrels dancing about on grass and flowers you've never seen before. Cars yield to pedestrians crossing roads. You have to walk on the other side of the road.

I expected myself to love this experience when I signed up for it. I didn't expect it to help

me grow so much as an independent individual. The entire experience: The long walks to Fiedler, Living at the Dorms, Making a spot of your own at Hale Library, Ping Pong at Moore and so much more! It's two months later, I leave this place as a Wildcat filled with Purple Pride!



INDUSTRIAL TRIPS



TAMOGHNA CHATTOPADHYAY, ELECTRICAL ENGINEERING
HARSH PATEL, MECHANICAL ENGINEERING

Jeffrey Energy Center



The only two female students of Mechanical Engineering with the HoD.

Dr. Kevin Wanklyn arranged an industrial visit to Jeffrey Energy Centre (St. Marys, Kansas) on the 5th and 6th of July. We assembled in the training room at the Centre where we got basic information regarding the plant and were given safety equipments. Jeffrey Energy Centre has three separate 800 MW units

providing a name-plate energy center capacity of 2.16 GW. Jeffrey EC is a typical modern coal-fired energy center. Its primary mission is to convert the chemical energy available from its Wyoming Powder River Basin sub-bituminous coal supply into electric energy. We were split into three different groups and each group got separate instructor who guided us to the heat exchanger system and combustion chamber inside the boiler. We then moved towards the stack and saw coal storage and the process of loading and unloading of coal from the train. He also took us to the turbine and feed water heaters equipments and to

cooling towers. After that he took us to training room again for some quick questions-answers session. At the end of the visit we had a group photo with the staff.



Westar Energy and Garmin International

Accompanied by Dr. Dwight Day and Mr. Kim Fowler, we left for Topeka visit Westar Energy. Westar's power grid covers more than 35,000 miles of transmission and distribution lines. The technology was an inspiring stop. Garmin specializes in GPS technology development for various appli-

cations. The highlight of the trip was the Flight Simulation software. An Engineering marvel, the system replicated a jet's cockpit. Two of us were lucky enough to be makeshift pilots! The pseudo-flight didn't really land well, but our trip to Garmin only increased our love for Electronics.



THE AMERICAN DREAM



BHAUMIL PATEL, MECHANICAL ENGINEERING

Getting out of my comfort zone



Kansas State University

"If you have anything really valuable to contribute to the world it will come through the expression of your own personality, that single spark of divinity that sets you off and makes you different from every other living creature."

- Bruce Barton

2 months ago, I was a completely different person. But today when I see myself in the mirror, it reflects the changes that have come into my personality. I got out of my comfort zone. This experience of living alone without my family in a foreign land with people I didn't know has been amazing. I think the biggest challenge for me was being on time. Punctuality was an everyday challenge which became a newly imbibed habit. Exploring this part of the globe has been a fulfilling adventure and I am grateful to KSU and GTU for it.



THE LABORATORY EXPERIENCE



YASH UPADHYAY, MECHANICAL ENGINEERING

BAJA SAE and Formula Cars and whatnot!



Technology at KSU: A golden opportunity for us!

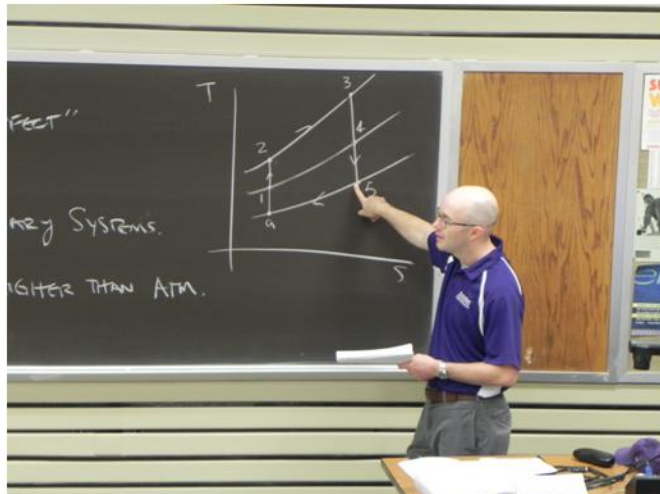
At KSU, the teaching laboratories are the way to go for students in the whole spectrum of Mechanical Engineering. They enhance students' understanding of presented classroom material. These labs are equipped with the latest

high-end equipments for analysis and research. Working with Cummins 4BT3.9 turbocharged engines and a General Motors Quad-4 fuel injected engines at the IC Engine Labs makes you feel like a real engineer!

Radiation Detection Instructional Laboratory (RDIL) which includes fundamental and advanced measurements of beta particles, alpha particles, gamma rays and neutrons, makes you think what Marie Curie would've done

with this technology.

We got to see BAJA SAE and Formula Cars at the Engineering Building Workshop. What a memorable day! 3D Printing, Automatic Lathe Machines and whatnot! Every single Mechanical Engineering student is going to miss it!



THE DERB SPEAKS OUT



UTSAV BRAHMBHATT, MECHANICAL ENGINEERING

This year's group is wonderful! We had a great time!



**COILA FAMELL,
OPERATIONS MANAGER**

The best thing about the program in my perspective is to have so many students from so many different cultures and to feed them!



**TAMMY POOVEY, FOOD
SERVICE SUPERVISOR**



The behavior of all the students towards us is lovely and we try to accommodate everyone! It's good to see their smiling faces!



**COLBY BRINKER,
STUDENTS' SUPERVISOR**



REMEMBERING KSU



GTU IEP - SUMMER 2016

Hale Library is HUGE. I think I'm addicted to it!



**BHAVIK PANDYA,
MECHANICAL ENGINEERING**

This wholesome academic experience at KSU inspires me to be a better engineer.



**DIBAKAR KARMOKAR,
MECHANICAL ENGINEERING**

Time is Money. I never believed it to be true until I came here!



**YASHVI SHAH,
MECHANICAL ENGINEERING**

Love the Chocolate Milk. Learned to love Salad! #VegetarianProblems



**MILIND TRIVEDI,
ELECTRICAL ENGINEERING**

I love the food here! #PerksOfBeingANonVegetarian



**AAKRITI CHATTERJEE,
ELECTRICAL ENGINEERING**

Conversation Café has been one of the best experiences at KSU!



**BRIJ CHAUN,
MECHANICAL ENGINEERING**

I love going to the Rec Centre. I think I'll miss that the most!

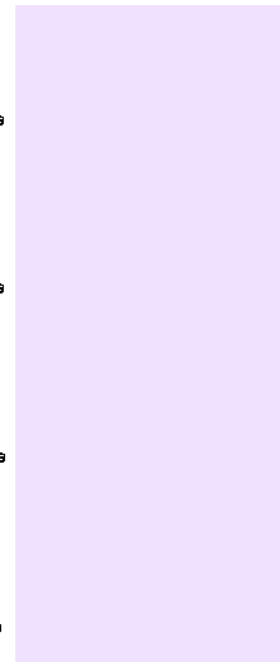


**DHAIVAT BACHECH,
ELECTRICAL ENGINEERING**

I missed my family a lot, but KSU became a second home! Go Cats!



**NIDHI KHAKHAR,
ELECTRICAL ENGINEERING**



NEWSLETTER

COMMITTEE



DR. M. H. HOSNI



PRACHI JHALA



PRACHI GODBOLE



DHANIK GOHEL



YASH UPADHYAY



HARSHKUMAR PATEL



PARTH PRAJAPATI



SAUMIL PANCHAL



UTSAV BRAHMBHATT



BHAVIN VYAS



HAARD PARIKH